

3D Stereo Camera

HIGH RESOLUTION 3D MACHINE VISION

Robust and high resolution 3D stereo camera with 12 MPixels sensors and integrated projector for industrial 3D applications.

Low system costs, quick implementation, a high flexibility in the application and a robust housing characterize the 3D stereo camera. With 12 million 3D data points and a 12 MPixels resolution, the camera captures every detail and does so with a frame rate of up to 9 Hz, depending on the resolution. In addition, the adjustable lenses on the cameras and integrated projector lead to optimal results, no matter in which workspace the camera is used.

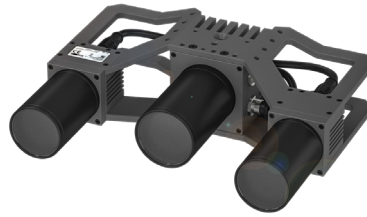
Via the GigE Vision interface, own 3D applications can be created based on the camera data.

With the software library included in the scope of delivery, the 3D calculation can be automatically outsourced to a graphics card, thus increasing the camera's performance.

Special features

- **High flexibility in application**
thanks to GigE Vision interface
- **Performs even in harsh environments**
thanks to IP54 protected housing
- **Enables highly accurate 3D image processing**
thanks to 12 MPix resolution of 3D data and 2D images
- **Optimally adaptable to your workspace**
thanks to adjustable lenses on cameras and projector



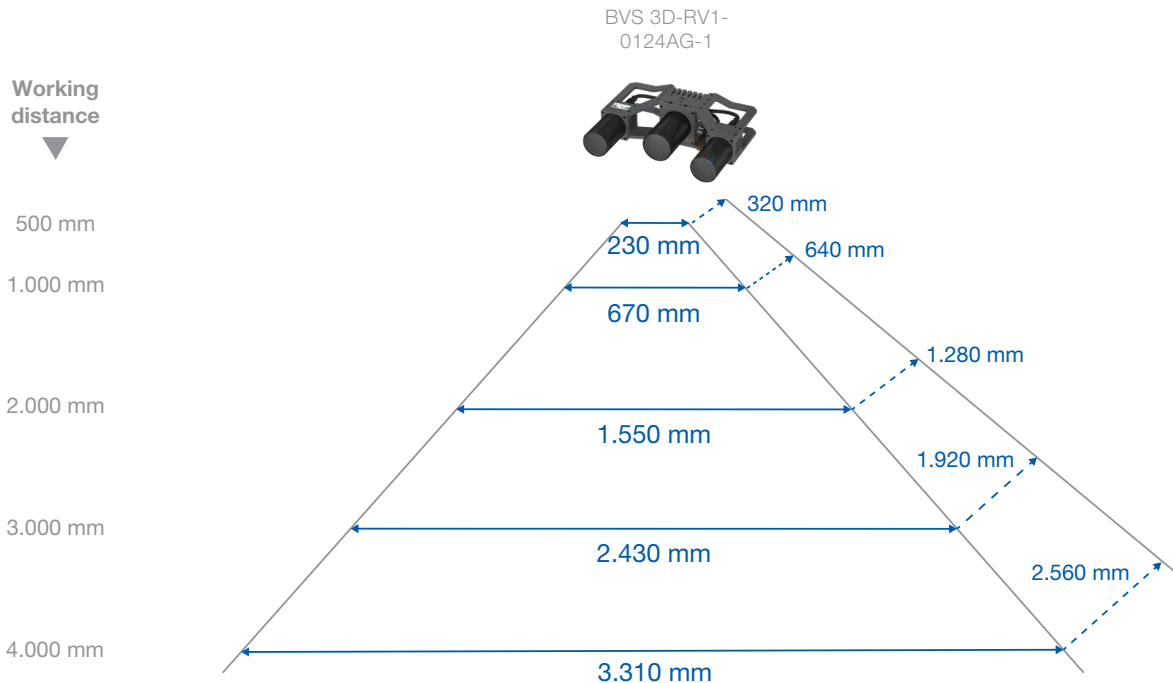


3D STEREO CAMERA

Model BVS 3D-RV1-	Base distance	Focal length	Image resolution	Field of view	Depth of the measurement range ¹
0124AG-1	210 mm	16 mm	4096 x 3008 pixels (12 MPixels)	Horizontal: 47° Vertikal: 35°	0.5 m - 4.0 m

¹ The 3D stereo camera can measure into infinite space. However, with the stereo method the accuracy is reduced as a square of the distance; hence we recommend the above measurement ranges.

WORKING RANGE



OUTPUT DATA

- Camera data via GigE Vision: left and right camera image, depth image (disparity image), confidence image, error image

For high-performance calculation of the depth image on the host PC, the use of a graphics card is recommended.

ACCESSORIES

Cable

- Gigabit Ethernet, M12 connector, 8-pin on RJ45, X-coded, different lengths
- Connection cable, M12 connector, 8-pin on open cable end, different lengths

Calibration plate

- Calibration plate large, sample size 440 mm x 320 mm

MATRIX VISION GmbH · Talstrasse 16 · 71570 Oppenweiler · Tel. +49-7191-94 32-0 · Fax +49-7191-94 32-288 · info@matrix-vision.com
Errors and omissions excepted. Date 09/2022 EN

We Change Your Vision.
www.matrix-vision.com